



the BEAST

evolution II



When you absolutely must have the
Toughest Industrial LED High Bay

100°C

High Ambient Temp.
-94°F to 212°F (100°C)



Field Replaceable LEDs



PVDF Corrosion
Resistant Coating



Chemical Repellent

 SOLAS RAY™ LIGHTING



the BEAST evolution II

"A real innovation in extreme environment LED lighting."



Engineered and tested for reliable operation you can count on in temperatures ranging from **-94°F to 212°F (100°C)**



Game changing LED module design (see details below). Replaceable to reduce the cost of long term ownership.



PVDF corrosion resistant coating over a die-cast aluminum housing + stainless steel hardware for incredible durability. 1,000 hour salt-fog test yielded no corrosion. [ASTM B117-19/ASTM D610-08(2019)]



Chemical repellent housing to stand up in areas where industrial chemicals are used or produced. (See chemical list on back)



The heart of the Beast E2 is its revolutionary DRIVER-ON-BOARD LED MODULE.

A marvel of engineering and innovative manufacturing processes, this proprietary module gives the Beast E2 outstanding light performance even in extreme hot and cold temperatures and requires no separate driver.

Over-Engineered

We use 12 IC current control chips when 4 would be enough for extra durability. Tested to 200° C without failure.

No Load Shedding

As modules approach their max. rated temperature, lumen output will not decrease. Reducing output at high temp. is a common occurrence with other high temp. lights.

1.2 mil Gold Wire

Beast E2 LEDs are connected with gold wire for enhanced durability under heavy thermal cycle stress.



No Harmonic Distortion

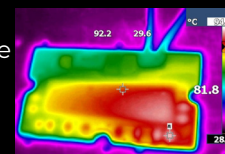
Quality components and advanced circuit design results in longer fixture life and no line noise generated by the Beast E2.

No Inrush Current

Inrush current has been engineered out of the module preventing large line voltage drops at start-up protecting the fixture and other equipment.

Waterproof/Thermal Coating

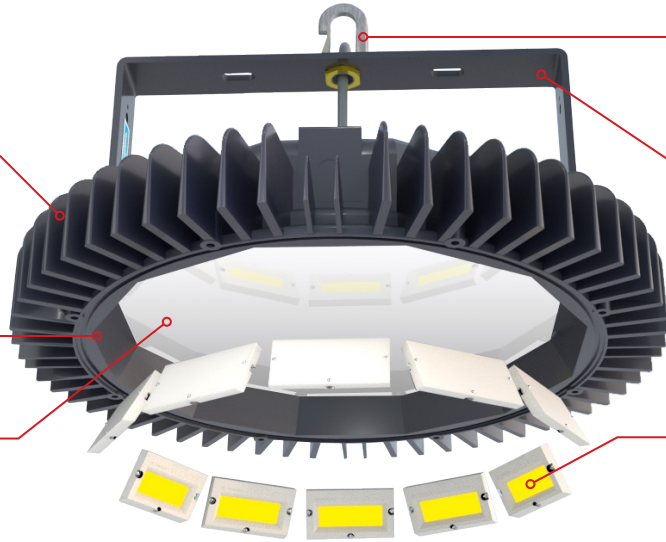
Special silicone based coating creates a waterproof seal around the module and dissipates heat for increased durability.



"Every component of the Beast E2 was selected/ designed with high ambient temperature applications in mind."



PVDF finish repels chemicals and prevents corrosion



Mounting hook boasts a 1,221°F (660°C) melting point

Heavy-duty #2 gauge mounting bracket

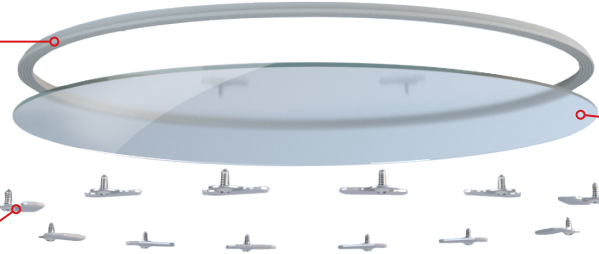
Rugged die-cast aluminum housing

Coated reflector ensures efficient light distribution and an effective 150° beam pattern

Game changing proprietary driver-on-board LED modules are replaceable for extended fixture life and lower cost of ownership (see details on left)

30kV surge protection

Specialized ribbed silicone rubber gasket provides the perfect lens seal

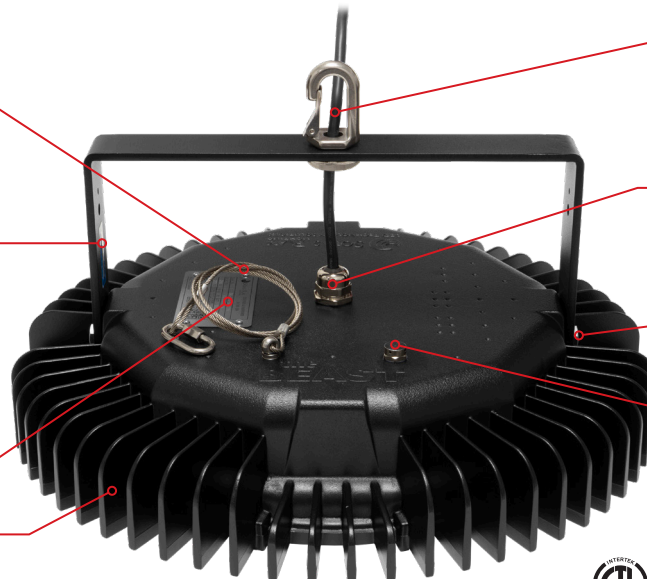


Flat tempered glass lens provides impact protection, heat resistance and excellent optical clarity

Precision made lens clasps feature a silicone rubber boot for an secure fit (12 total)

10' AWM style 4476 power cord is rated for 600V and 200°C

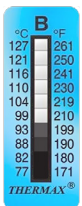
36" safety cable kit included standard



Factory torqued and sealed stainless steel cable gland

Stainless steel hardware

Pressure equalization vent maintains atmospheric pressure inside the housing (features a moisture blocking membrane)



High temp thermostat label verifies highest temperature reached

Stainless steel nameplate

Oversized cooling fins maximize thermal efficiency



CERTIFIED UL 1598 IP66



Technical Info

SPECIFICATIONS

Voltage	120VAC / 277VAC / 347VAC / 480VAC
Wattage	210W / 350W (+/- 10%)
Color Temp	5000 Kelvin
Housing	PVDF coated aluminum alloy
Color	Black
Lens	Flat tempered glass lens
Efficacy	98.6 lm/W(350W) / 95 lm/W(210W)
CRI	>70
Beam Angle	150°
Cable Gland	Stainless steel
Power Cord	AWM style 4476 - 600V / 200°C rated
Weight	32 lbs
Surge Protection	>30kV
Ambient Temp.	-70°C (-94°F) to 100°C (212°F)

LUMENS

210W	350W
20,706 lm	35,000 lm

WARRANTY

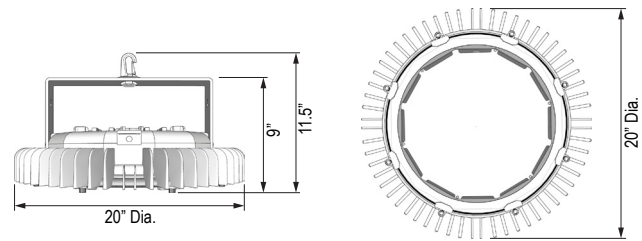
Ambient Temperature	Warranty Length
65° (149°F) Max Ambient Temp.	5 Year Limited Warranty
85° (185°F) Max Ambient Temp.	2 Year Limited Warranty
100°C (212°F) Max Ambient Temp.	1 Year Limited Warranty

PART NUMBERS

Part Number	Watts	Voltage
DBL-210-50-120V-UBSS	210W	120VAC
DBL-210-50-277V-UBSS		277VAC
DBL-210-50-347V-UBSS		347VAC
DBL-210-50-480V-UBSS		480VAC

Part Number	Watts	Voltage
DBL-350-50-120V-UBSS	350W	120VAC
DBL-350-50-277V-UBSS		277VAC
DBL-350-50-347V-UBSS		347VAC
DBL-350-50-480V-UBSS		480VAC

DIMENSIONS



INDUSTRIAL APPLICATIONS

Primary Metal Fabrication
Steel Mills
Smelting Operations
Casting Foundries
Metal Polishing
Boiler Rooms

Blast Furnaces
Paint Curing
Ovens/Kilns
Pulp/Paper Production
Glass Manufacturing
Power Generation

Power Plants
Chemical Plants
Refineries
Aircraft Hangars
Ship Yards
Rail Yards

Aerospace Facilities
Industrial Freezers
Ice Manufacturing
Cryogenic Industries

CHEMICAL AGENT RESISTANCE LIST

Acetamide 50%
Acetic acid, aqueous solution 5%
Acetic acid, aqueous solution 10%
Ammonia solution 10%
Benzene
Benzine
Boric acid, aqueous solution 10%
Butyl acetate
Calcium chloride solution 10%
Carbon tetrachloride
Chloroform
Citric acid, aqueous solution 10%
Cupric sulphate 10%
Cyclohexane
Diesel Oil
Dioxane
Edible fats and oils

Ethanol 96%
Ethyl acetate
Ethyl ether
Formaldehyde, aqueous solution 30%
Formic acid, aqueous solution 10%
Glycerine
Glykol
Glysantin, aqueous solution 40%
Heating Oil
Hydrachloric acid, aqueous solution 36%
Hydrogen peroxide, aqueous solution 30%
Ink
Isopropanol
Lactic acid, aqueous solution 90%
Linseed oil
Methanol
Mythylene chloride

Milk
Nitric acid, aqueous solution 2%
Oxalic acid, aqueous solution 10%
Ozone
Parafin oil
Perchloroethylene
Petroleum
Phenol, aqueous solution
Phosphoric acid concentrate
Potassium dichromate, aqueous solution 10%
Propanol
Pyridine
Salicylic acid
Silicone oils
Soda lye, aqueous solution 50%
Soda solution, aqueous solution 10%
Sodium bisulphate, aqueous solution 10%

Sodium chloride, aqueous solution 10%
Sodium nitrate, aqueous solution 10%
Sodium thiosulphate 10%
Sulphur dioxide
Sulphuric acid, aqueous solution 2%
Tartaric acid
Tetrahydrofuran
Toluene
Transformer oil
Trichlorethylene
Vaseline
Wax, molten
Winer, Brandy
Xylene
Zinc chloride, aqueous solution 10%



(888) 391-4822 · SolasRay.com · quotes@solasray.com

5935 West 84th Street, Suite A · Indianapolis, IN 46278