

LED Lighting Solutions For **Battery Production Facilities**



Due to soaring demand for lithium-ion batteries to meet the needs of electric vehicle and energy storage solutions, construction of new battery plants is booming.

Production is estimated to increase somewhere between 7 and 15 times by 2030! Many areas in these new facilities require specialty lighting solutions for hazardous locations, extreme temperatures and corrosive environments.

Areas Where Specialty Lighting May Be Required

High Temperature

- Drying Oven Area
- Burn-in Chamber Area
- Testing / Grading Areas
- Rotary Kiln Area (lithium-ion recycling)

Cold Temperature

- Cold Rooms / Cold and Clean Rooms
- Dry Rooms
- Raw Material Storage
- Testing / Grading Areas

Hazardous Location / Explosion Proof

- Raw Material Storage (volatile/flammable liquids and powders)
- Electrode Slurry Mixing and Coating (flammable solvent / recovery)
- Electrolyte Filling (flammable vapors)

Corrosive

- Electrolyte Handling and Filling Areas

LED Lighting Products For Extreme Environments / Hazardous Locations

Solas Ray Lighting offers many specialty LED lighting products designed for the conditions present in battery production/recycling/research facilities.

Extreme Environment



The Beast™ E2 - DBL Series

Lumens: **20,700 - 35,000** | IP Rating: **IP66**

- Ambient temperature: -70°C (-94°F) to 100°C (212°F)
- Corrosion resistant / chemical repellent PVDF finish
- Trade Agreement Act compliant



The Goliath™ - HBGO Series

Lumens: **25,000 - 60,000** | IP Rating: **IP66**

- Ambient temperature: -80°C (-112°F) to 105°C (221°F)
- C5-M epoxy marine grade finish (PVDF Optional)
- Trade Agreement Act compliant



The Monitor™ - HTR9 Series

Lumens: **5,700 - 10,000** | IP Rating: **IP67**

- Ambient temperature: -40°C (-40°F) to 100°C (212°F)
- Marine grade housing / high vibration resistance.
- Trade Agreement Act compliant



Hazardous Location



The Sentinel™ HJCR Series

Lumens: **5,600 - 39,200** | IP Rating: **IP66 / IP67**

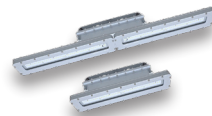
- HazLoc: Class I, Div 1&2 / Class II, Div 1&2
- IP66, IP67, DLC, IK08, IK10 ratings
- Internal EM backup battery option



The Dominator™ - HJDS Series

Lumens: **2,800 - 28,000** | IP Rating: **IP66**

- HazLoc: Class I, Div 1&2 / Class II, Div 1&2
- IP66, DLC, IK10 ratings
- Internal EM backup battery option



The Steward™ - HJIL Series

Lumens: **2,800 - 16,800** | IP Rating: **IP66**

- HazLoc: Class I, Div 1&2 / Class II, Div 1&2
- IP66, DLC, ratings
- Internal EM backup battery option



The Commander™ - CTL/CTLES Series

Lumens: **420 per head** | IP Rating: **IP65**

- HazLoc: Class I, Div 1 / Class II, Div 1
- IP65, NEMA4X ratings
- Up to 3 hours battery run time

Disclaimer: The electrical/environmental requirements and specifications for a given facility/area must be determined by the engineer, national/local electrical codes, etc. Lighting fixtures must be chosen to meet these individual specification/codes on a project-by-project basis. Solas Ray Lighting makes no claim to where any of the above lighting products may be used in any type of battery production facility without a proper engineering review of the specific needs of the location where lights are to be installed



(888) 391-4822 • SolasRay.com • quotes@solasray.com • 5935 West 84th Street, Suite A • Indianapolis, IN 46278